

DATA SHEET SUBMITTAL



Model number: ECCC-60U/ECUO-60H

Air Handler Heat Pump System

| | |
|---------------|---------------|
| Location: | Approval: |
| Engineer: | Date: |
| Submitted to: | Construction: |
| Submitted by: | Unit #: |
| Reference: | Drawing #: |



INDOOR SPECIFICATION

| | | |
|-------------------|------|--------------------------|
| Dimension (W×D×H) | inch | 21-5/8 x 21-1/2 x 27-3/4 |
| | mm | 549 x 546 x 706 |
| Package (W×D×H) | inch | 31-1/8 x 25 x 25-5/8 |
| | mm | 790 x 635 x 650 |
| Net/Gross Weight | lbs | 97 / 115 |
| | kg | 43.9 / 52.2 |

OUTDOOR SPECIFICATION

| | | |
|------------------------------|----------------|--------------------------|
| Compressor Type | TWIN-ROTARY | |
| Compressor Model | ETPQ480D66UMU1 | |
| Refrigerant | R454B | |
| Refrigerant Oil Charge(mL) | 1300 | |
| Refrigerant Oil | VG75 | |
| Outdoor Air Flow (Max) (CFM) | 2,649 | |
| Outdoor Noise Level (dBA) | 64 | |
| Dimension (W×D×H) | inch | 37-1/2 x 16-3/8 x 52-1/2 |
| | mm | 952 x 415 x 1333 |
| Package (W×D×H) | inch | 43-1/8 x 19-1/2 x 58-1/4 |
| | mm | 1095 x 495 x 1480 |
| Net/Gross Weight | lbs | 242 / 275 |
| | kg | 110.2 / 124.8 |

EFFICIENCY

| Cooling | | Heating | |
|---------|------|---------|------|
| SEER2 | 16.0 | HSPF2-4 | 8.3 |
| EER2 | 10.0 | COP | 2.80 |

PERFORMANCE OF COOLING

| Cooling (Btu/hr) | |
|---------------------------------|---|
| Rated Capacity | 52,000 |
| Min/Max Capacity | 18,000~55,000 |
| Moisture Removal(L/h) | 8.4 |
| Standard Operating Range(°F/°C) | -22~-122(-30~50) |
| Rated Cooling Conditions: | Indoor: 80°F DB/67°F WB Outdoor: 95°F DB/75°F WB |

PERFORMANCE OF HEATING

| Heating (Btu/hr) | |
|---|---|
| 1. @ 47°F Rated | 56,000 |
| 2. @ 47°F Min/Max Capacity | 21,000~57,000 |
| 3. @ 17°F Rated | 37,800 |
| 4. @ 5°F Rated: Capacity / COP | 45000/1.8 |
| 5. @ 5°F Max: Capacity | 45,000 |
| Standard Operating Range(°F/°C) | -22~-75(-30~24) |
| 1. Rated Heating Conditions: | Indoor: 70°F DB/60°F WB Outdoor: 47°F DB/43°F WB |
| 2. Rated Heating Conditions: | Indoor: 70°F DB/60°F WB Outdoor: 17°F DB/15°F WB |
| 3. Heating Conditions, Compressor Operating at Max. Frequency | Indoor: 70°F DB/60°F WB Outdoor: 5°F DB/5°F WB |

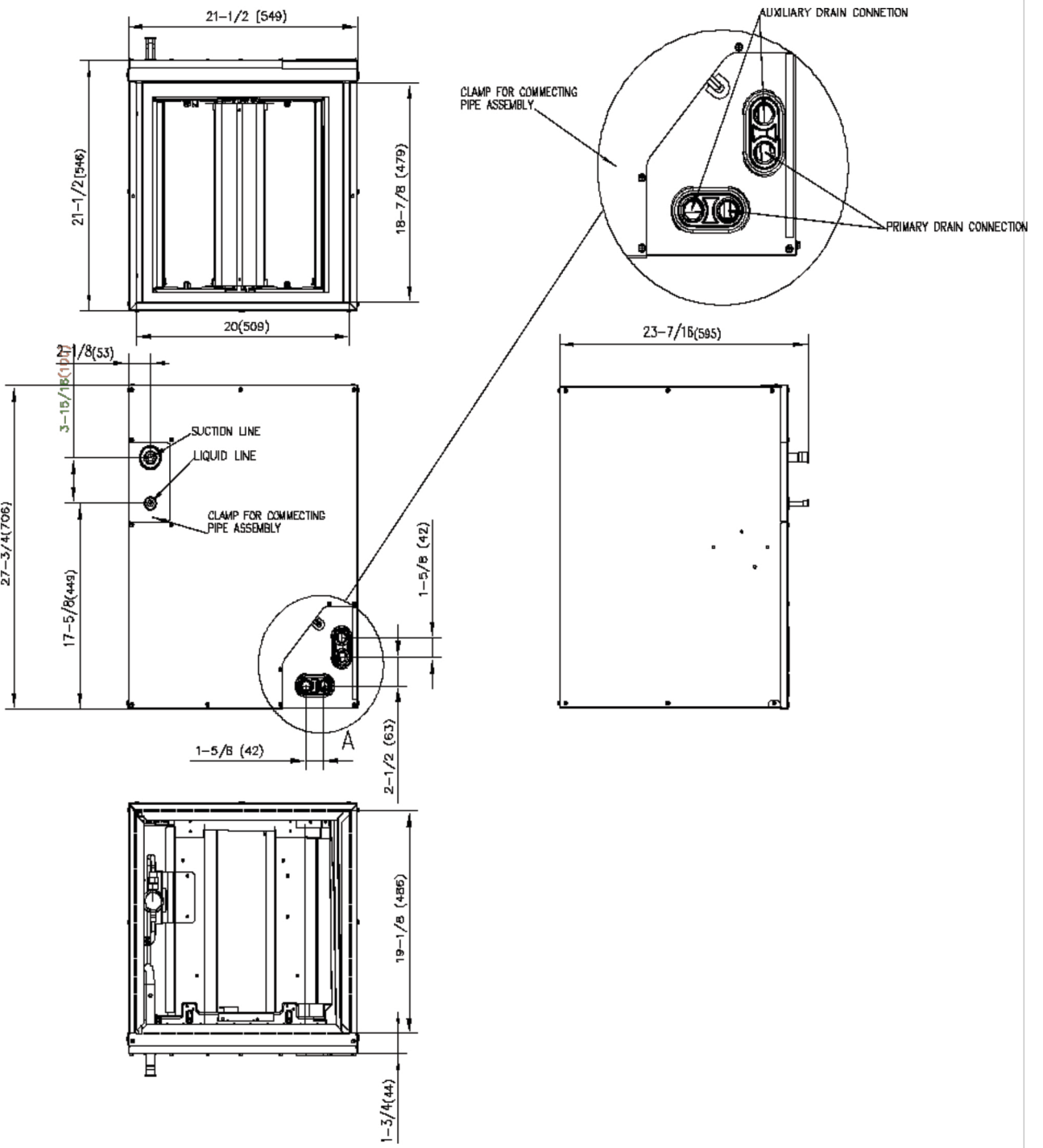
ELECTRICAL

| | |
|----------------------------------|--|
| Indoor Power Supply | 24V,60Hz,1Ph |
| Indoor MCA 115V/(208/230V) | / |
| Indoor MOP | / |
| Outdoor Power Supply | 208/230,60Hz,1Ph |
| Outdoor MCA | 40 |
| Outdoor MOP | 40 |
| Communication Wiring | AWG 20-2 |
| Compressor RLA | 31 |
| Outdoor Fan Motor RLA | 1.2 |
| Outdoor Fan Motor W | / |
| Indoor Fan Motor RLA | / |
| Indoor Fan Motor W | / |
| System Power Input @ Cooling (W) | 5200(1,550 ~ 6,310) |
| System Power Input @ Heating (W) | 5860(1,200 ~ 6,550) |
| MCA: Min. circuit amps (A) | MOCP: Max. over current protection (A) |
| RLA: Rated load amps (A) | W: Fan motor rated output (W) |

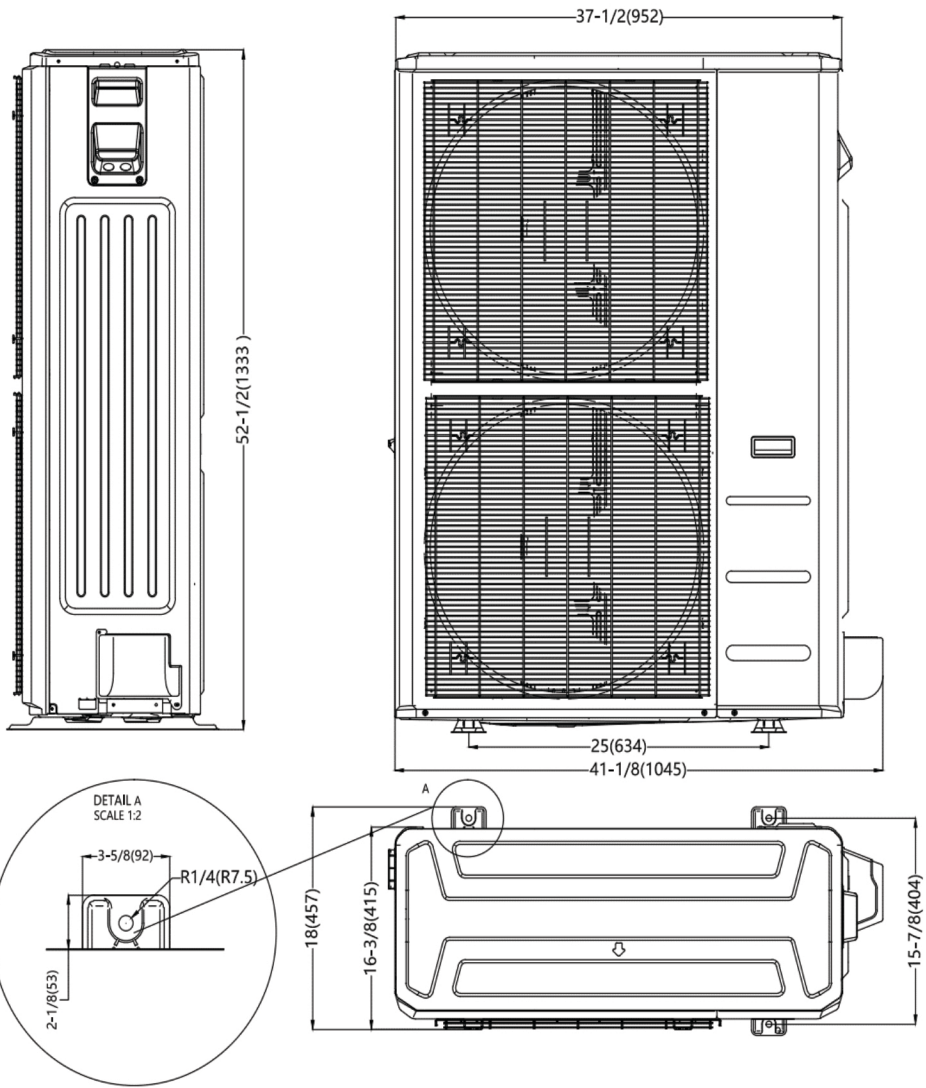
PIPING

| | |
|---|---------------|
| Throttle type(Indoor) | TXV |
| Throttle type(Outdoor) | EXV |
| Liquid Size | 9.52mm(3/8in) |
| Gas Size | 19mm(3/4in) |
| Max. Piping Length(ft/m) | 246(75) |
| Max. Height Difference(ft/m) | 98(30) |
| Max. Pre-charged Length(ft/m) | 24.6(7.5) |
| Refrigerant Pre-charged Amount (oz/ft³) | 183.42(5.2) |
| Additional Charge of Refrigerant(oz/ft³)(g/r) | 0.7(65) |
| Connection Method | Flared |

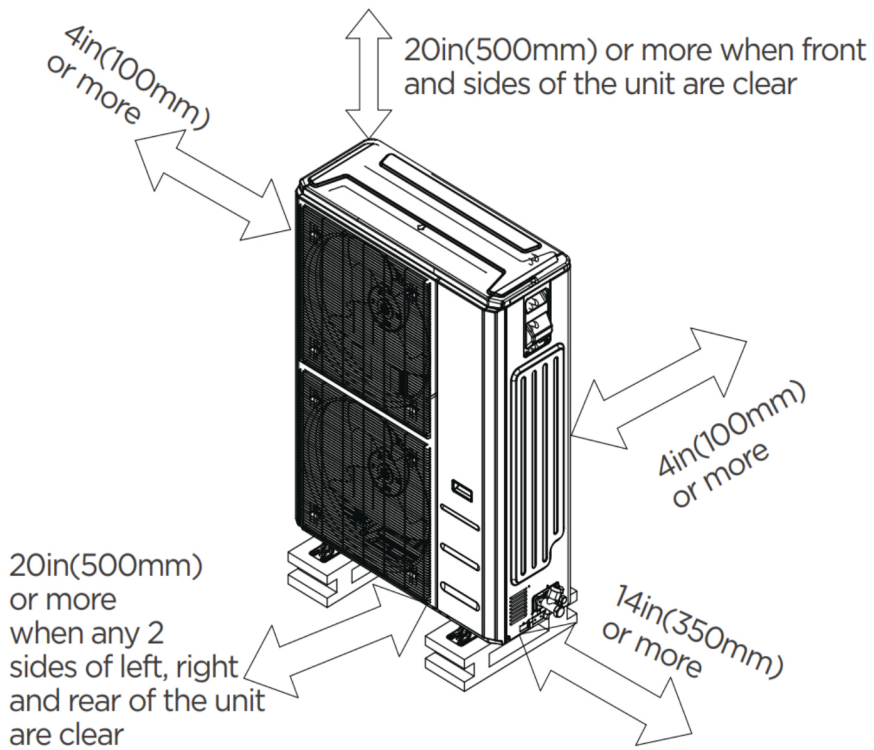
INDOOR UNIT DIMENSION



OUTDOOR UNIT DIMENSION



INSTALLATION INSTRUCTION FOR INDOOR UNIT



FEATURES

- Multi-position installation: horizontal(left or right), vertical(up or down)
- Aluminum Coil
- R454B refrigerant sensor
- Easy Maintenance
- Multiple control options available:
 - Two way communication wired controller with built-in WiFi:120N(X6W)
 - Third-Party 24V Thermostat